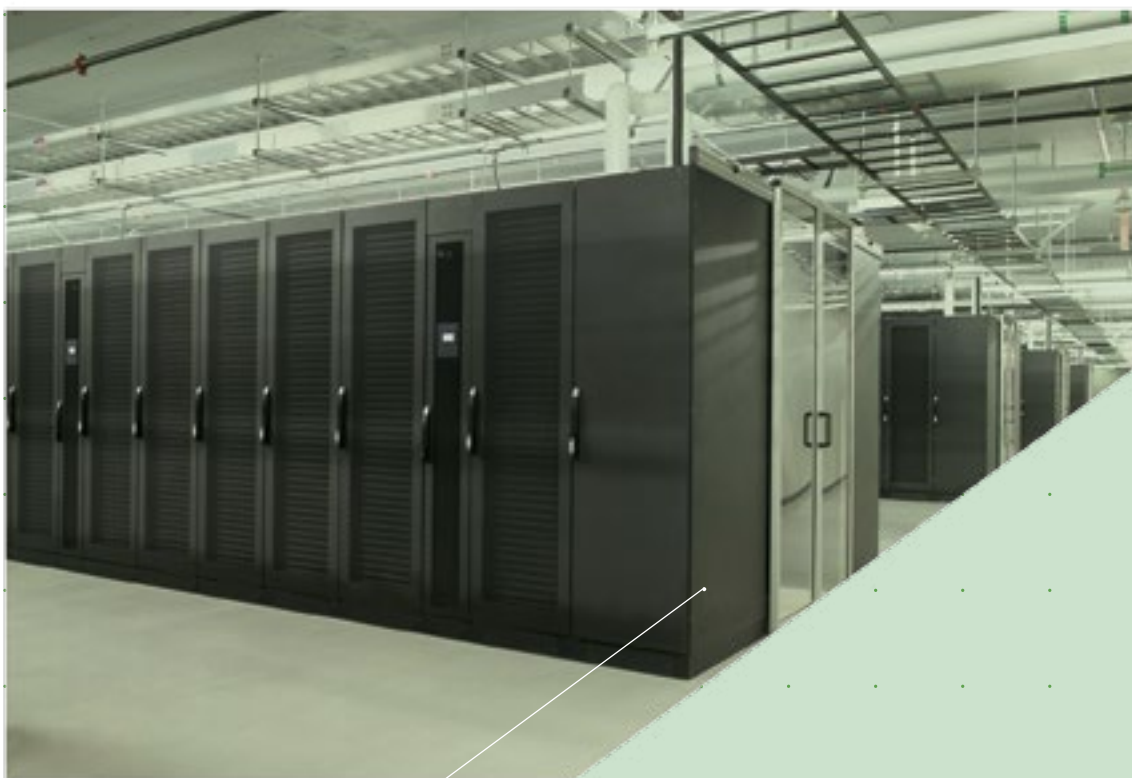




Inove Indústria

PRODUCT CATALOG



ELECTRICAL CABLE TRAY LADDER CABLE TRAY STRUT CHANNELS



Inove industry is ISO 9001 certified

The Inove Industry is a manufacturer of electromechanical products focused in the national and international market with the purpose of attending its clients in a rapid, efficient and effective manner all in an atmosphere of Total Quality, a decisive characteristic in an ever so demanding consumer reality. This was the start off point of a policy for constant improvement of the process to optimize commercial operations with our clients and suppliers.

In 2014 the company obtained ISO 9001 which certifies quality within international parameter of its internal practice.

Professionals with more than 10 years' experience, adequate inventory, operational logistics formulated to optimize commercial operations, and a well-trained sales team with know-how to solve daily technical queries.

In case of more complex necessities regarding our products or services, we offer competent technical support thus assuring reliability and security to our clients in a competitive, rapid, demanding, and ever changing market.

MISSION:

Attend and exceed our customers' and partners' expectations furnishing products and services of high quality, reliability, and punctuality.

VISION:

Consolidate and fortify our trademark, nationally and internationally, as a first alternative in the "Electromechanical Products" market thru credible, ethical, and transparent commercial channels assuring loyalty and excellency in our services.

VALUES:

- Ethics
- Commitment
- Team spirit
- Proactivity
- Agility
- Appreciation of our collaborators offering opportunities and professional growth

SOME OF OUR CLIENTS:





Inove Indústria

INDEX

| | |
|-----------------------|----|
| THE INOVE | 02 |
| STRUT CHANNELS | 05 |
| FIXING | 13 |
| ELECTRICAL CABLE TRAY | 17 |
| LADDER CABLE TRAY | 23 |
| UNDER FLOOR DUCTS | 29 |
| TYPES OF METAL FINISH | 31 |



Inove Indústria

DNV·GL

MANAGEMENT SYSTEM CERTIFICATE

Certificate No:
14983 E-001-EQ-004-004

Initial certification date:
28, July, 2014

Valid:
20, May, 2016 - 21, July, 2017

This is to certify that the management system of

I NOVE INDUSTRIA E COMERCIO LTDA - ME

Av. Doutor Assis Ribeiro, 2.000, 03717-001, São Paulo, SP, Brazil

has been found to conform to the Quality Management System standard:
ISO 9001:2008

This certificate is valid for the following scope:

**Manufacturing of raceways, profiles, bed for cables and accessories and
distribution of conduits and fixing elements.**

**Fabricação de eletrocalhas, perfilados, leito para cabos e acessórios e
distribuição de eletrodutos e elementos de fixação.**

Place and date:
São Paulo, 20, May, 2016



The BVA's signatory to the IAF MLA

For the issuing office:
DNV GL - Business Assurance
Av. Alfredo Egydio de Souza Aranha, 100 -
Bloco 9 - 21 andar - Vila Crescência, São
Paulo, SP, Brazil

Marcella Venturini
Management Representative

Lack of fulfillment of conditions as set out in the Certification Agreement may render the Certificate invalid.
ACCREDITED ONLY: DNV GL Business Assurance S.P.A. - ZW024955-0-2014-01, BAF0000001, NETHERLANDS, 14311411202020.
www.dnv-gl.com



PARKING LOTS



CHEMICAL
INDUSTRY

SHOPPING
CENTERS



SUPERMARKETS



STRUT CHANNELS

Closed duct for cable distribution built of low carbon steel folded in "C" form with the following dimensions: 38mm width and 38mm or 19mm height. Slotted Perforated or flat supports are available with longitudinal distances of 38mm for junction between themselves or other components. Standard length is 6000mm. The following connections follow the same characteristics adapted to geometrical differences attending to diverse building and distribution realities.



Strut Channel Perforated
Ref: i9.001

Dimension
38 x 38 x 6000 mm



Flat Channel 2 Hole
Ref: i9.002

Dimension
38 x 38 x 6000 mm



Strut Channel Perforated
Ref: i9.003

Dimension
19 x 38 x 6000 mm



Flat Channel 2 Hole
Ref: i9.004

Dimension
19 x 38 x 6000 mm



Flat Channel 4 Hole
Ref: i9.005

Dimension
38 x 76 x 3000 mm



Flat Channel Perforated
Ref: i9.006

Dimension
38 x 76 x 3000 mm



Strut Channel Cover
Ref: i9.007

Dimension
38 x 3000 mm



Cover for Double Channel
Ref: i9.008

Dimension
76 x 3000 mm



Strut Channel Closure Strip
Ref: i9.009

Dimension
38 x 3000 mm



Flat Plate Fitting
Ref: i9.010

Dimension
38 x 3000 mm



Slotted Angle
Ref: i9.011

Dimension
38 x 38 x 3000 mm

STRUT CHANNELS

PRODUCT CATALOG

Available in 38x38mm | 76x38mm



External Channel Joiner
Ref: i9.012



Internal Channel Joiner
Ref: i9.013



Internal Elbow Channel Joiner
Ref: i9.014



Internal Tee Channel Joiner
Ref: i9.015



Internal Cross Channel Joiner
Ref: i9.016

Available in 38x38mm | 76x38mm



Cable Support
Ref: i9.017



Short Support for Light Fixtures
Ref: i9.018



Long Support for Light Fixtures
Ref: i9.019



Short Overhead Hanger Bracket
Ref: i9.020



Long Overhead Hanger Bracket
Ref: i9.021



Coupling for Channels
Ref: i9.022

STRUT CHANNELS

PRODUCT CATALOG

Available in 38x38mm



Channel-to-Box Connector
Ref: i9.023



Conduit Connector Plate
Ref: i9.024
Dimension
1/2" - 3/4" - 1"



Conduit Connector Double Side Exit
Ref: i9.025
Dimension
1/2" - 3/4" - 1"



Conduit Connector Side Exit
Ref: i9.026
Dimension
1/2" - 3/4" - 1"



Conduit Exit Cap
Ref: i9.027
Dimension
1/2" - 3/4" - 1"



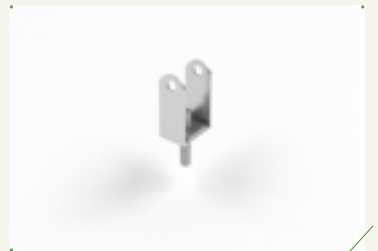
Channel Washer
Ref: i9.028



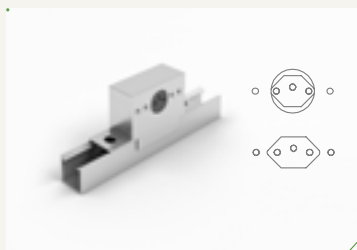
"C" Beam Clamp with Swivel Adapter
Ref: i9.029



"C" Beam Clamp
Ref: i9.0230



Swivel Adapter Beam Clamps
Ref: i9.031



Outlet Box for Strut Channel
Ref: i9.032
Dimension 38 x 38mm

STRUT CHANNELS

PRODUCT CATALOG

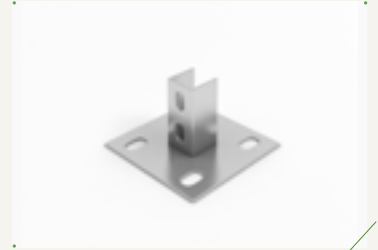
Available in 38x38mm | 76x38mm



1-Hole Internal Channel Base Plate
Ref: i9.033



4 Hole Internal Channel Base Plate
Ref: i9.034



4 Hole External Channel Base Plate
Ref: i9.035



4 Hole External Double Channel
Base Plate
Ref: i9.036



"Z" Shaped Connector Fitting
Ref: i9.037



"Z" Bracket Double Channel
Ref: i9.038



6 Hole Double Channel Top Hat
Brackets
Ref: i9.039



"Z" Bracket
Ref: i9.040



"U" Bracket
Ref: i9.041



1 Hole Expansive Channel
Ref: i9.042



2 Hole Expansive Channel
Ref: i9.043



3 Hole Expansive Channel
Ref: i9.044

STRUT CHANNELS

PRODUCT CATALOG



4 Hole Angle Bracket WK
Ref: i9.045



2 Hole Angle Bracket WK
Ref: i9.046



2 Hole Angle Bracket
Ref: i9.047



4 Hole Angle Bracket
Ref: i9.048



2 Hole Adjustable Corner Angle
Ref: i9.049



1 Hole Square Plate Washer
Ref: i9.050



2 Hole Splice Plate
Ref: i9.051



3 Hole Splice Plate
Ref: i9.052



4 Hole Splice Plate
Ref: i9.053



Flat Plate Bracket
Ref: i9.054 Length
Length Dimension
50 mm-500 mm



Flat Plate Double Strut Bracket
Ref: i9.055
Length Dimension
50 mm-800 mm



Bracket Cantilever Bracket
Ref: i9.056
Length Dimension
150 mm - 1200 mm

STRUT CHANNELS

PRODUCT CATALOG

Available in 38x38mm | 76x38mm



Horizontal Elbow 90°

Ref: i9.057

Dimension 38 x 38 mm



Vertical Inside 90°

Ref: i9.058

Dimension 38 x 38 mm



Vertical Outside 90°

Ref: i9.059

Dimension 38 x 38 mm



One Way Electrical Junction Box Terminal

Ref: i9.060



Two Way Electrical Junction Box Terminal

Ref: i9.061



Two Way Angle Junction Box

Ref: i9.062



Tee Way Junction Box

Ref: i9.063



Cross Way Junction Box

Ref: i9.064



Trough Way Channel Junction Box Back

Ref: i9.065



Vertical Channel Connection

Ref: i9.066

38 x 38 mm



Reversal Channel Connection 90°

Ref: i9.067

38 x 38 mm



Horizontal Channel Connection

Ref: i9.068

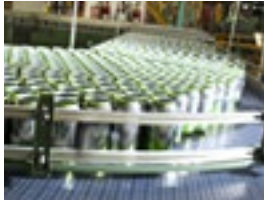
38 x 38 mm

“

Inove Industry satisfies all our needs regarding quality in production, commitment in delivery schedules, and prompt assistance.

”

Ivan Teixeira - Seiko



FOOD INDUSTRY



PHARMACEUTICAL
INDUSTRY

STORES



CANTEENS



FIXINGS

Complete line of fixings for electro duct installation, ladder cable trays, strut channels and other products of our line of fabrication. For a perfect union of electro ducts and its derivations, we suggest the use of $\frac{1}{4}$ " diameter bolts. And $\frac{3}{8}$ " bolts in the strut channels and ladder cable trays. Also available, a complete line of pipe clamps that can be used in electrical and hydraulic installations.



Tool Clips
Ref: i9.080 - 1/2" - 4"



Strut Pipe Clip
Ref: i9.081 - 1/2" - 4"



Single Bolt Strut Clamp
Ref: i9.082 - 1/2" - 6"



1 Hole Strap
Ref: i9.083 - 1/2" - 4"



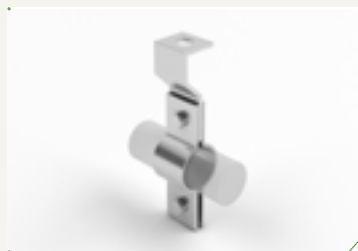
Sprinkler Hanger
Ref: i9.084 - 1/2" - 12"



"U" Bolts
Ref: i9.085 - 1/2" - 12"



Yoke Clamp for Steel Pipe
Ref: i9.086 - 1/2" - 12"



2 Piece Pipe Clamp for Steel Pipe
Ref: i9.087 - 1/2" - 12"



Double Bolted Pipe Clamps
Ref: i9.088 - 1/2" - 12"



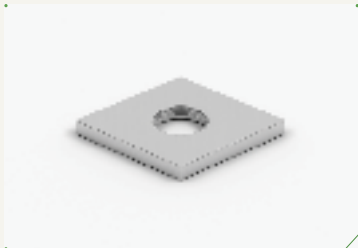
Hex Nut
Ref.: i9.089
 Screw "WW"
 1/4"
 5/16"
 3/8"
 1/2"



Flat Round Washer
Ref.: i9.090
 Screw "WW"
 1/4"
 5/16"
 3/8"
 1/2"



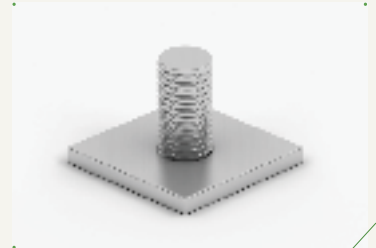
Round Washer Cheap Price
Ref.: i9.091
 Screw "WW"
 1/4"
 5/16"
 3/8"
 1/2"



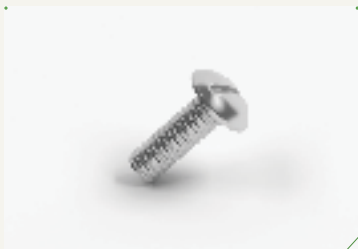
Rhombus Nut without Spring
Ref.: i9.092
 Screw "WW"
 1/4"
 5/16"
 3/8"
 1/2"



Rhombus Nut without Spring
Ref.: i9.093
 Screw "WW"
 1/4"
 5/16"
 3/8"
 1/2"



Rhombus Spring Nut with Threaded
Ref.: i9.094
 Screw "WW"
 1/4"
 5/16"
 3/8"
 1/2"



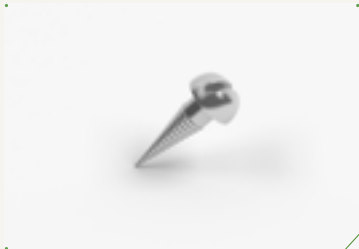
Slotted Truss Head Screw
Ref.: i9.095
 Screw "WW" Length
 1/4" 3/4"
 5/16" 3/4"
 3/8" 3/4"



Carriage Bolt
Ref.: i9.096
 Screw "WW" Length
 1/4" 3/4"
 5/16" 3/4"
 3/8" 3/4"



Hex Head Bolt
Ref.: i9.097
 Screw "WW" Length
 1/4" 1/2"
 5/16" 3/4"
 3/8" 1 1/2"
 1/2" 2"
 2 1/2"
 3"



Slotted Head Coach Screw
Ref: i9.098

| Screw "W" | Dimensions |
|-----------|------------|
| S-6 | 3,9x32 mm |
| S-8 | 4,8x38 mm |
| S-10 | 6,3x50 mm |



Hex Head Coach Screw
Ref: i9.099

| Screw "W" | Dimensions |
|-----------|---------------|
| S-6 | 3/16" x1" |
| S-8 | 1/4" x 1.3/4" |
| S-10 | 5/16" x 2" |



Threaded Rod
a 1/4" x 3000mm - Ref: i9.100;
a 3/8" x 3000mm - Ref: i9.101



Rod Coupling Nut
a 1/4" Ref: i9.102;
a 3/8" Ref: i9.103



Rawlplug Nylon
S.6 - S.8 - S.10
Ref: i9.104



Sleeve Anchor
a 1/4" - a 5/16" - a 3/8"
Ref: i9.105



Sleeve and Taper Nut
a 1/4" - a 5/16" - a 3/8"
Ref: i9.106



Bullet Type Anchor
a 1/4" - a 5/16" - a 3/8"
Ref: i9.107



DISTRIBUTION
CENTER



RETAIL SHOPS

GARNER



OFFICES



ELECTRICAL CABLE TRAY

The Electrical Cable Tray product line is recommended for use in commercial installations, industries, sheds, shopping centers, or wherever there is a need for cable distribution be it for electrical, data, voice or closed-circuit-television purposes. Folded in "U" or "C" forms with standard lengths of 3000mm with vast options of dimensional and/or geometrical needs. Available in covered or uncovered perforated or flat forms.

Also available is a complete line of accessories that meet all types of assembly situations maintaining the same straight line characteristics.

ELECTRICAL CABLE TRAY

PRODUCT CATALOG

Specifying: Ex.: Perforated Cable Tray 100x50x3000mm – PZ.
Code Cable Tray: 202 / Dimensions/ Finish
End Code: i9.202-100/50-PZ.



Flat Cable Tray
Ref: i9.200



Flat Cable Tray with
Flange
Ref: i9.201



Perforated Cable Tray
Ref: i9.202



Perforated Cable Tray with
Flange
Ref: i9.203



Straight Section Covers
Ref: i9.204



Cover Cable Tray Bolted
Ref: i9.205



Closure Strip Cable
Tray
Ref: i9.206



Perforated Divisor Strip
Ref: i9.207



Septo Divisor Liso
Ref.: i9.208

ELECTRICAL CABLE TRAY

PRODUCT CATALOG

Specifying: Ex.: Perforated Cable Tray 100x50x3000mm – PZ.
Code Cable Tray: 202 / Dimensions/ Finish
End Code: i9.202-100/50-PZ.



Horizontal Bend Connector 90°
Ref: i9.209



Horizontal Bend Connector 45°
Ref: i9.210



Vertical Outside Bend Connector 90°
Ref: i9.211



Vertical Outside Bend Connector 45°
Ref: i9.212



Vertical Inside Bend Connector 90°
Ref: i9.213



Vertical Inside Bend Connector 45°
Ref: i9.214



Horizontal Tee Connector 90°
Ref: i9.215



Vertical Tee Down Connector 90°
Ref: i9.216



Vertical Tee Up Connector 90°
Ref: i9.217



Vertical Tee Down Side Connector 90°
Ref: i9.218



Horizontal Cross Connector 90°
Ref: i9.219



Vertical Elbow Connector 90°
Ref: i9.220



**Straight Horizontal Tee Con-
nector 90°**
Ref: i9.221



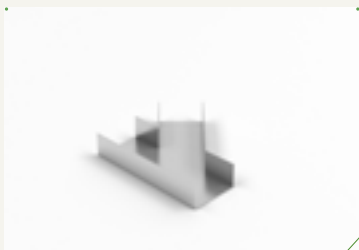
**Straight Horizontal Elbow
Connector 90°**
Ref: i9.222



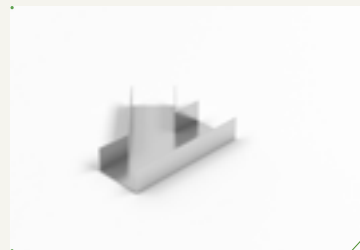
**Straight Horizontal Cross
Connector 90°**
Ref: i9.223



**Byway with Vertical Rise
Connector 90°**
Ref: i9.224



**Straight Horizontal Wye
Branches Right Hand 45°**
Ref: i9.226



**Straight Horizontal Wye
Branches Left Hand 45°**
Ref: i9.227



**Left Bend Direction
Connector 45°**
Ref: i9.228



**Right Bend Direction Conne-
ctor 45°**
Ref: i9.229



Straight Reducer Connector
Ref: i9.230



Right Hand Reducer
Ref: i9.231



Left Hand Reducer
Ref: i9.232



Flaps Reducer Cable Tray
Ref: i9.233

ELECTRICAL CABLE TRAY

PRODUCT CATALOG



Channel-to-Box Connector
Ref: i9.234



Cable Duct Dropout
Ref: i9.235



Splice Plate
Ref: i9.236



Blind end Plate
Ref: i9.237



End Plate with Exit for Electro Ducts
Ref: i9.238



Standard Splice Plate
Ref: i9.239



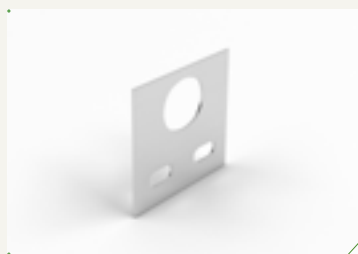
Horizontal Cover Clamp
Ref: i9.240



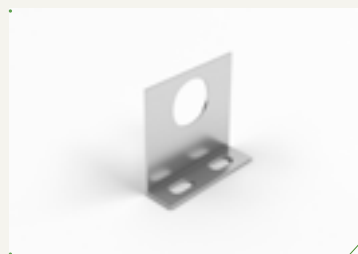
Cover Tray Cover Clamp
Ref: i9.241



Vertical Cover Clamp
Ref: i9.242



Horizontal Flexible Conduit Take Off Plate
Ref: i9.243



Vertical Flexible Conduit Take Off Plate
Ref: i9.244

Conversion Table:
Inches to millimeters

| Inches | Millimeters 'mm' |
|---------|------------------|
| 1/2" | 21,3 |
| 3/4" | 26,7 |
| 1" | 33,4 |
| 1. 1/4" | 42,2 |
| 1. 1/2" | 48,3 |
| 2" | 60,3 |
| 2. 1/2" | 75,5 |
| 3" | 88,9 |
| 4" | 114,3 |

“

I would like congratulate Inove Industry for the ISO 9001.
An end result of much work accomplished with ethics,
commitment and dedication.

”

Amanda Lima - Protek



DATA
CENTERS



MINING
INDUSTRY

INDUSTRY PULP
AND PAPER



STEEL
INDUSTRY



LADDER CABLE TRAYS

The Ladder Cable Tray product line is indicated to accommodate light or heavy cables for use in electrical, data, voice, closed-circuit-television or any other type of cable needs in various engineering projects. Fabricated in standard lengths of 3000mm with vast options of dimensional and/or geometrical needs, soldered or coupled, secure and functional, permitting visual inspection and easy access for maintenance.

LADDER CABLE TRAYS

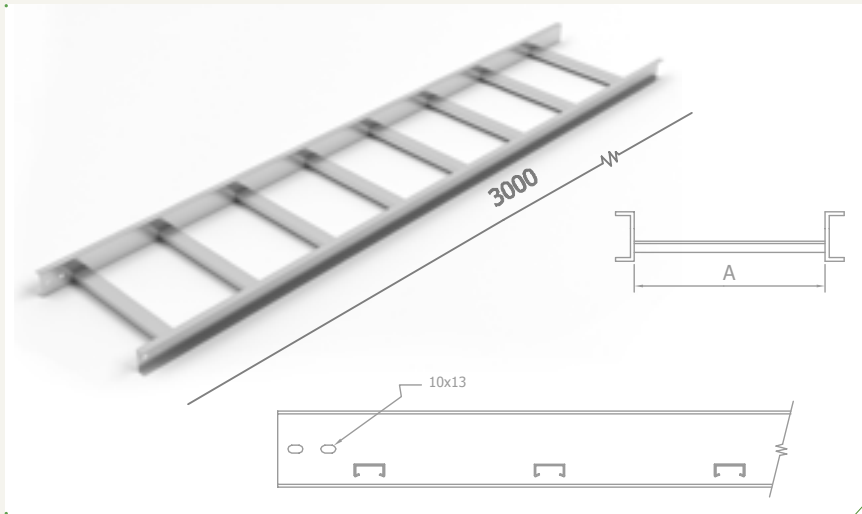
PRODUCT CATALOG

Specifying: Ex.: Medium Duty Cable Ladder Tray EF 400x100x3000 mm-GF.
Code: i9.802-EF / Dimensions/Finish.
End Code: i9.802-EF-400/100-GF.

IF = INTERNAL FLAPS
EF = EXTERNAL FLAPS

Light Duty Ladder Tray

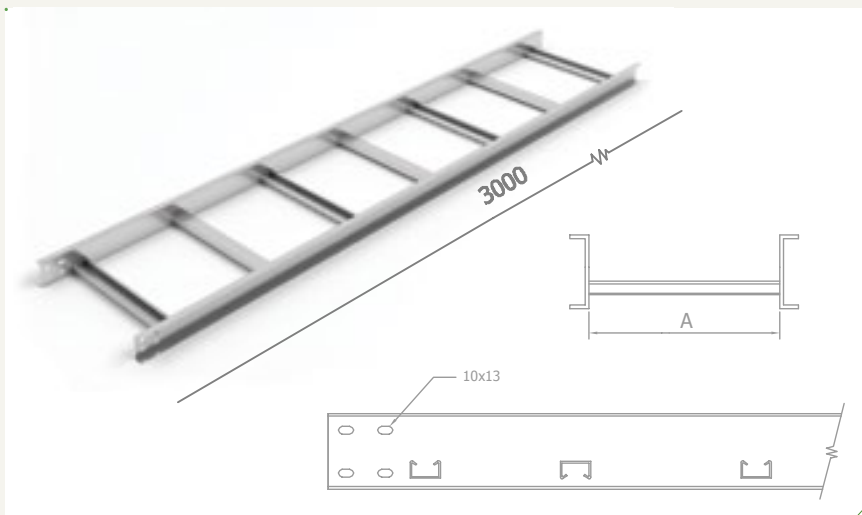
Ref.: i9.800 - EF
Ref.: i9.800 - IF
Longitudinal 60x19mm
Trays 19x38mm
Spaced every 200mm



Medium Duty Ladder Tray

Ref.: i9.801 - EF (Flap 75)
Ref.: i9.801 - IF (Flap 75)
Ref.: i9.802 - EF (Flap 100)
Ref.: i9.802 - IF (Flap 100)

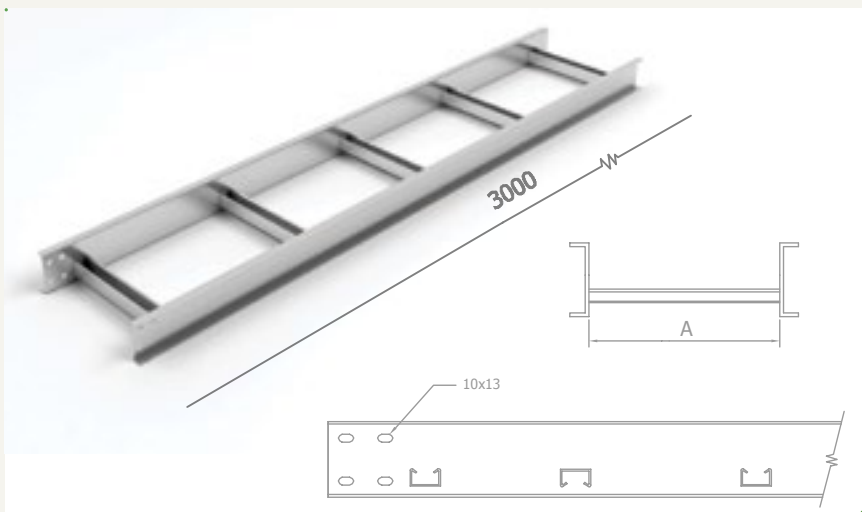
Longitudinal 60x19mm or
75x19mm
Trays 19x38mm
Spaced every 250mm



Heavy Duty Ladder Tray

Ref.: i9.803 - EF
Ref.: i9.803 - IF

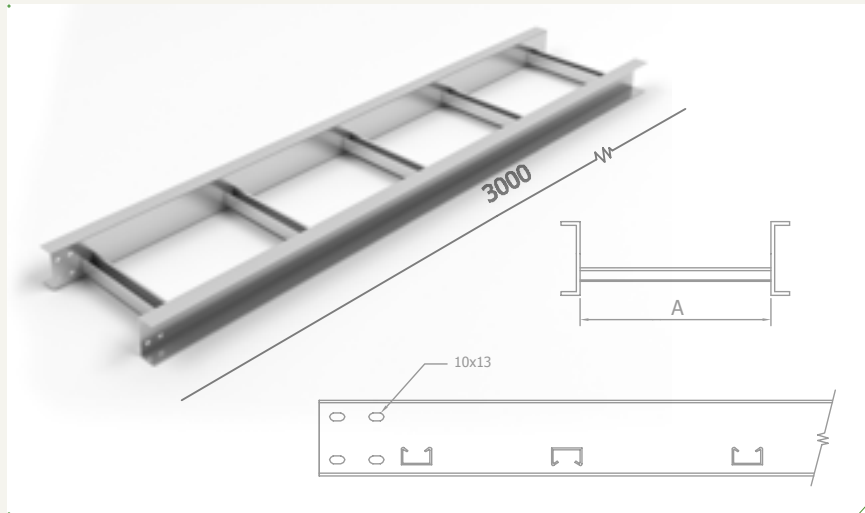
Longitudinal 100x19mm
Trays 38x38mm
Spaced every 500mm



LADDER CABLE TRAYS

PRODUCT CATALOG

Specifying: Ex.: Cable Ladder Bend 45° for Heavy Duty Cable Ladder Tray 400x100 | Radius 320 mm – GF
Code: i9-811-EF-400/100/320-GF | Radius: 320 or 520 mm



Extra Heavy Duty Ladder Tray

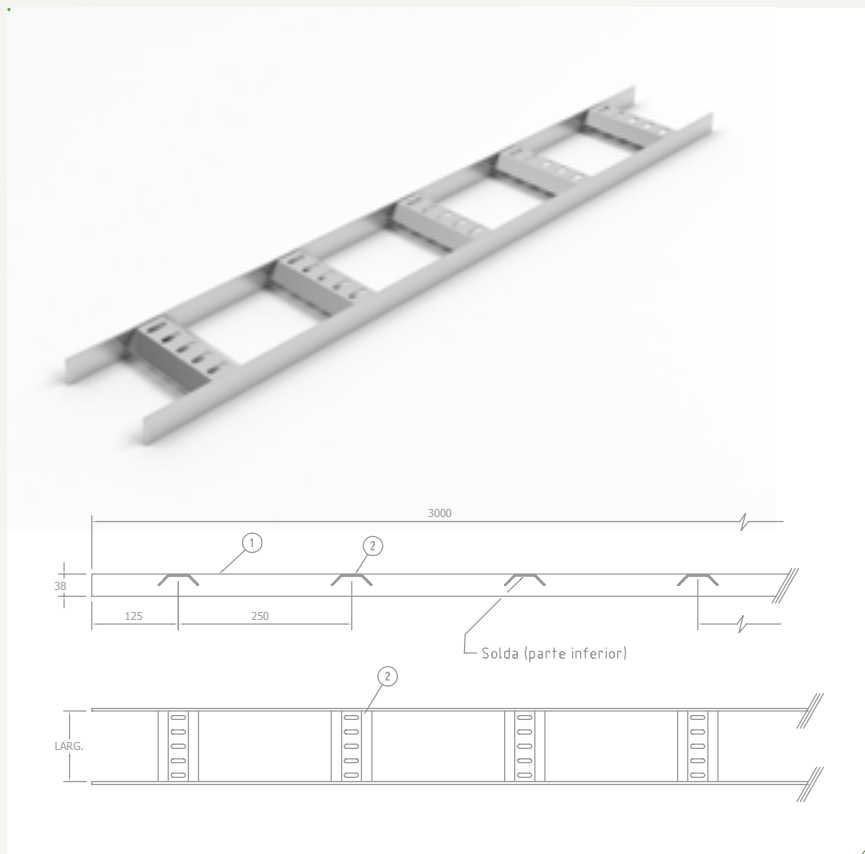
Ref.: i9.804 – EF

Ref.: i9.804 – IF

Longitudinal 100x45mm

Trays 38x38mm

Spaced every 500mm



Extra Heavy Duty Ladder Tray

Ref.: i9.805-LN

Flat Bar 38.1x4.76x3000mm

Trays 18x2.0x35x70mm

Finish Hot-Dip Galvanized (NBR 6323)

Specifying:

Example:

Extra Heavy Duty Ladder Tray

400x38x3000mm – GF

Code: i9.805-LN

Dimensions/Finish

CABLE LADDER ACCESSORIES

PRODUCT CATALOG

Specifying: Ex.: Cable Ladder Bend 45° for Heavy Duty Cable Ladder Tray 400×100 | Radius 320 mm – GF
Code: i9-811-EF-400/100/320-GF | Radius: 320 or 520 mm



Cable Ladder Bend 45°
Ref: i9.810



Cable Ladder Bend 90°
Ref: i9.811



Cable Ladder Internal Riser 45°
Ref: i9.812



Cable Ladder Internal Riser 90°
Ref: i9.813



Cable Ladder External Riser 45°
Ref: i9.814



Cable Ladder External Riser 90°
Ref: i9.815



Reversal Riser Cable Ladder 90°
Ref: i9.816



Cable Ladder Tee 90°
Ref: i9.817



Cable Ladder Cross 90°
Ref: i9.818



Cable Vertical Ladder Tee Up 90°
Ref: i9.819



Cable Ladder Vertical Tee Down 90°
Ref: i9.820



Cable Ladder Elbow 90°
Ref: i9.821

CABLE LADDER ACCESSORIES

PRODUCT CATALOG

Specifying: Ex.: Splice Plate Flap 100 mm-GF | Code: i9.826 / Flange Height/Finish.
End Code: i9.826-100-GF



Cable Ladder Straight Reducer
Ref: i9.822



Cable Ladder Right Hand Reducer
Ref: i9.823



Cable Ladder Left Hand Reducer
Ref: i9.824



Splice Plate
Ref: i9.837 (Flap 60)
Ref: i9.838 (Flap 75)
Ref: i9.839 (Flap 100)



Vertical Adjustable Splice Plate
Ref: i9.840 (Flap 60)
Ref: i9.841 (Flap 75)
Ref: i9.842 (Flap 100)



Splice Plate Connector 90°
Ref: i9.843 (Flap 60)
Ref: i9.844 (Flap 75)
Ref: i9.845 (Flap 100)



Expansion Guide
Clamp 3/8"
Ref: i9.846



Overhead Clamp
Ref: i9.847



Tray-to-Box Connector
Ref: i9.848



Adjustable Splice Plate
Ref: i9.849



Hold Down Unit
Ref: i9.850 (Flap 60)
Ref: i9.851 (Flap 75)
Ref: i9.852 (Flap 100)



Cover Clamp
Ref: i9.853 (Flap 60)
Ref: i9.854 (Flap 75)
Ref: i9.855 (Flap 100)



Suspension for Cable Ladder
Ref: i9.856 (Flap 60)
Ref: i9.857 (Flap 75)
Ref: i9.858 (Flap 100)



"U" Clamp for Cable Ladder
Ref: i9.859 (Flap 60)
Ref: i9.860 (Flap 75)
Ref: i9.861 (Flap 100)

“

Honesty and Cooperation make part of the service we received at Inove Industry. We congratulate the commitment and the ISO 9001 certification.

”

José Carvalho - Bematel



CALL
CENTERS



MOVIE THEATERS

HOTELS



EVENT HALL



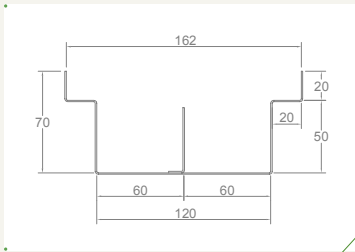
UNDER FLOOR DUCTS

The Under Floor Duct product line is indicated for environment with suffers constant layout modifications such as: Banks, Commercial Offices, Engine Rooms, among others and also offers flexible covers which permit various electrical outlet options. Information such as: type and thickness of floor tiles or other type of floor covering such as carpets or granite must be informed.

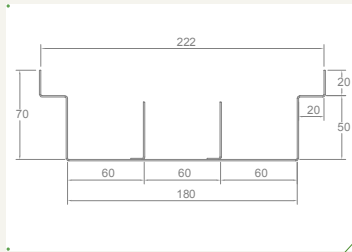
Reinforced and environment compatible and flexible covers assure safe working conditions. Also available is a complete line of accessories that meet all types of assembly situations maintaining the same straight line characteristics.

UNDER FLOOR DUCTS

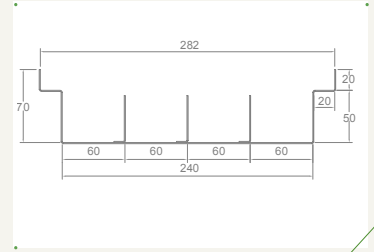
PRODUCT CATALOG



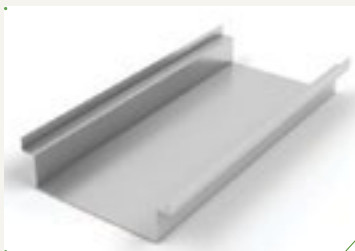
Ref.: i9.300



Ref.: i9.301



Ref.: i9.302



Under floor Duct
vRef: i9.303



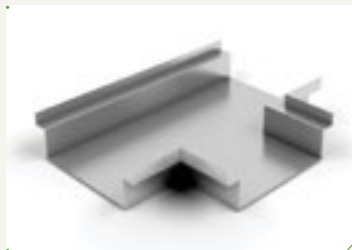
Under floor Duct Box Cover
Ref: i9.304



Under Floor Cross Over Duct
Ref: i9.305



Under Floor Elbow Duct 90°
Ref: i9.306



Under Floor Tee Duct
Ref: i9.307



Under Floor Splice Plate
Ref: i9.308



End Closure
Ref: i9.309

NBR: BRAZILIAN ASSOCIATION OF TECHNICAL STANDARDS

AISI: AMERICAN IRON AND STEEL INSTITUTE

Inove Industry's products are available in the following Metals and finishing.

PRE-ZINC PLATED (PZ) NBR 7008

Steel 1008/1010 (Low carbon content) Zinc coated by a hot dip process directly from the factory

ELECTROLYTIC GALVANIZED (GE) NBR 10.476

Comes with a zinc coating obtained by an electroplating process.

HOT DIP GALVANIZED (GF)

The hot dip or hot emersion galvanizing process presents the best result in steel corrosion protection according to NBR 6323.

PAINTED (PT) = ELECTROSTATIC POWDER PAINT

This finish offers extra protection and guarantees durability, in addition to providing an elegant appearance, with varying colors according to customer's request.

STAINLESS STEEL (IN) = STAINLESS AISI 304, AISI 316, AISI 430, AMONGST OTHERS AS SPECIFIED IN THE PROJECT.

ALUMINUM (AL) = ALLOY 1000 AND 1200 H14, AMONGST OTHERS AS SPECIFIED IN THE PROJECT.

Note: If type of treatment and/or raw material is not specified, Inove Industry adopts as production standard (Steel 1008/1010 Pre-Zinc Plated according to NBR 7008).

We reserve the right to eventual changes of information in this catalog without prior notice.



Inove Indústria



Inove industry is ISO 9001 certified

Dr Assis Ribeiro AV, 2000
Engenheiro Goulart District
São Paulo, SP - Brazil - 03717-001
Phone: +55 11 2389 4091 - 2389 4096
www.inoveindustria.com.br
contato@inoveindustria.com.br